

PIC-MSM-228 Threaded Magnet M8

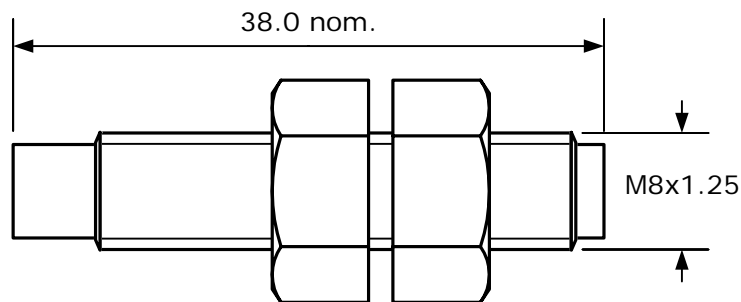
Data

Housing Material	PA6.6	
Orientation	axially	
Remanence Br	mT	1185
Coercivity HcB	kA/m	828
Coercivity HcJ	kA/m	955
Energy Product (BH) max.	kJ/m ³	275
Magnetic Moment M	x10 ⁻⁵ Vs cm	1.50
Operating Temperature max.	°C	85
Temperature Coefficient Tk(Br)	%/°C	-0.12

Nominal values unless otherwise specified

Dimensions

in mm



Ordering Information

Type	Nuts (packed separately)
PIC MSM-228	0 = without nuts 1 = with two nuts

Ordering example: PIC MSM-228-1 describes MSM-228, including 2 nuts

Customized types, other magnet materials and high temperature grades available.